



Cover Replace & Unloading System **CRS-1000**

- **System Performance**
- **System Layout**
- **System Functions**

SYSTEM PERFORMANCE

UPH

400 strips

**YIELD
PERFORMANCE**

99.99%

Strip Handling Capacity

Strip & Boat (90~110 X 100~240

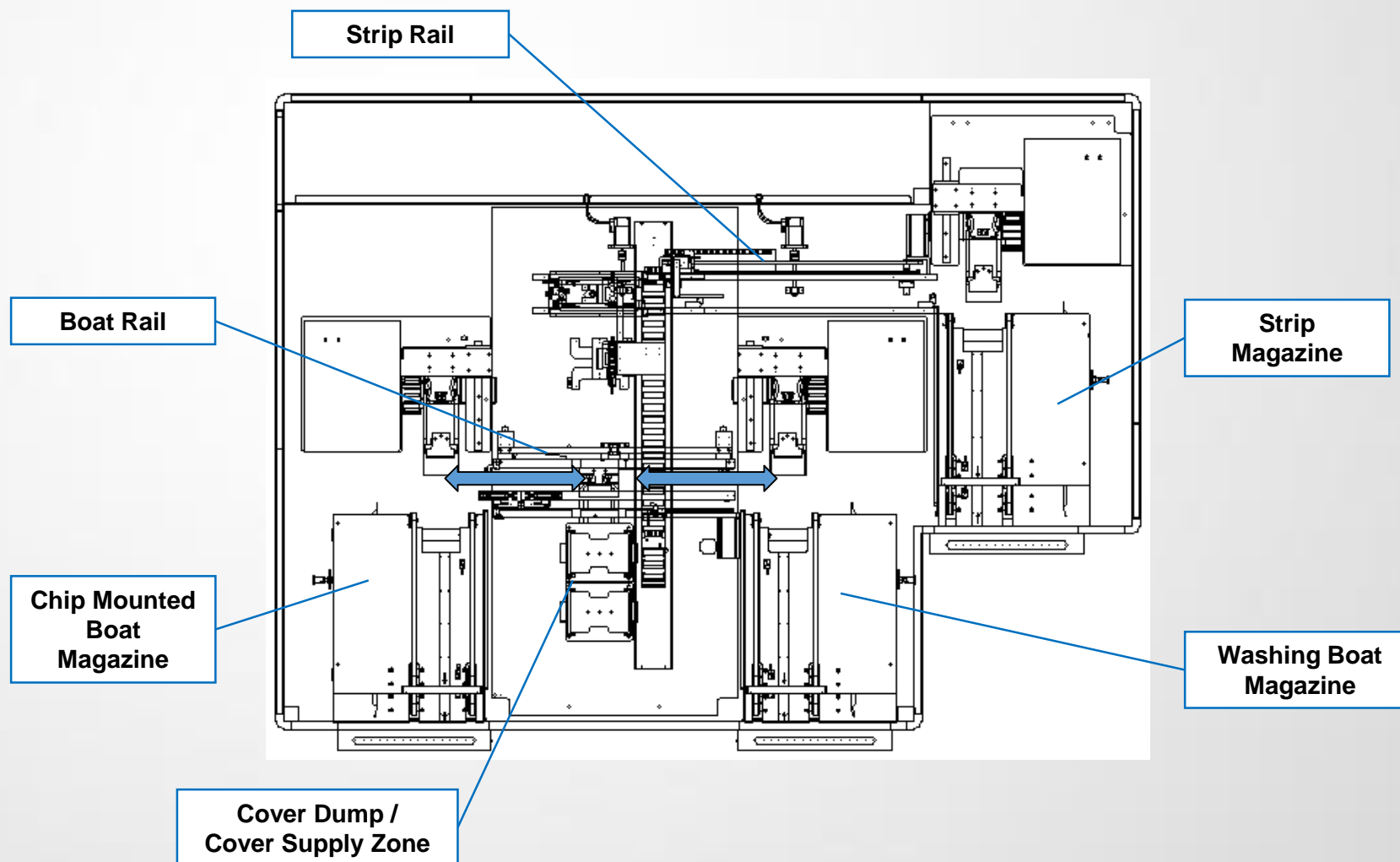
Conversion part

Strip picker, Cover picker, Lift block / 10 min

Foot Print & Weight

1,900(L)x900(W)x1800(H)_{mm} / 1,500Kg

SYSTEM LAYOUT



Previous
Slide

Next
Slide

LOADING & UNLOADING ZONE



Magazine elevator



Loading pusher

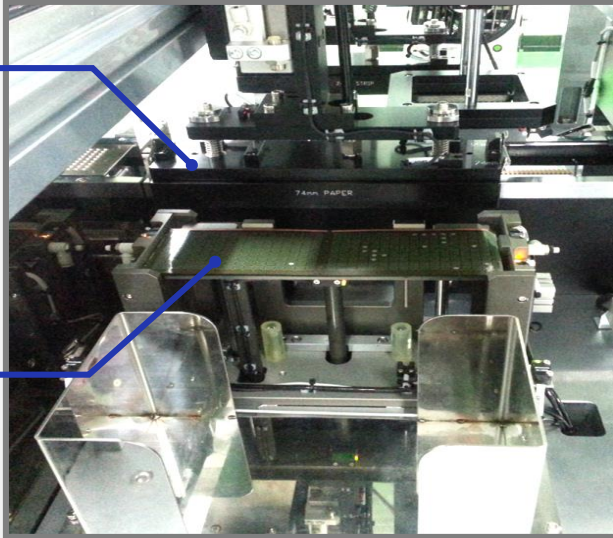


Boat gripper

- **Magazine loading by conveyor belt (4 MGZ Stack)**
- **Auto conversion by step motor for MGZ length adjustment**
- **Strip loading by step motor (loading pusher)**
- **Overload detect sensor for prevent Boat damage**
- **Magazine empty / full detect sensor**
- **Boat loading / unloading by boat gripper**

STRIP LOADING ZONE

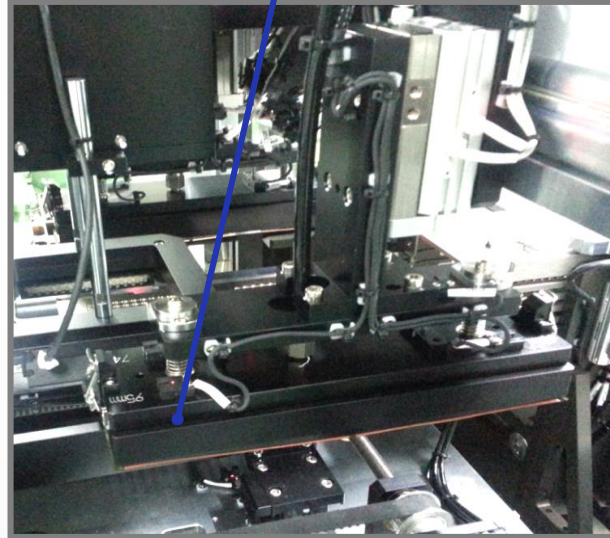
**Cover
picker**



Cover loading unit

**Cover
elevator**

**Strip
picker**

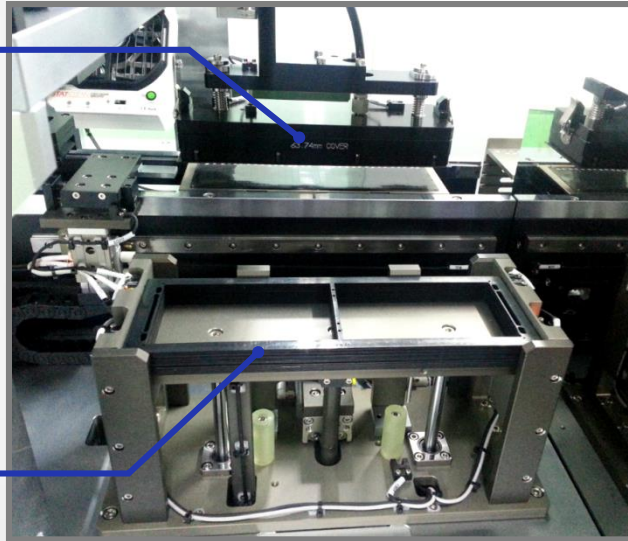


Strip picker

- **Cover Stack Elevator by AC motor**
- **Strip loading on boat by vacuum strip picker**

COVER LOADING & BOAT UNLOADING ZONE

**Cover
picker**



Cover loading unit



Unloading pusher



Magazine elevator

**Cover
elevating unit**

- **Cover elevating by AC motor**
- **Strip loading by step motor (loading pusher)**
- **Overload detect sensor for prevent boat damage**
- **Magazine elevating by servo motor**
- **Magazine loading by conveyor belt (4 MGZ Stack)**
- **Auto conversion by step motor for MGZ length adjustment**
- **Magazine empty / full detect sensor**

Technical realization

to create an imagined reality